

Revised waste collection schedule for Central and Southern Thimphu City.

SL/ No.	AREAS CODE	SUNDAY				TUESDAY				WEDNESDAY				THURSDAY				FRIDAY				SATURDAY			
		S1	S2	S3	S4	S1	S2	S3	S4	S1	S2	S3	S4	S1	S2	S3	S4	S1	S2	S3	S4	S1	S2	S3	S4
1.0	WCA01	2								2								2							
2.0	WCA02					2								2											
3.0	WCA03					2								1											
4.0	WCA04	2								2								3							
5.0	WCA05			1					1			1				1								1	
6.0	WCA06			1					1			1				1								1	
7.0	WCA07					1								1								2			
8.0	WCA08					2								2								1			
9.0	WCA09	2								2								2							
10.0	WCA10			2						2								1							
11.0	WCA11				1									2									2		
12.0	WCA12	2										2							2						
13.0	WCA13			2				2								2						2			
14.0	WCA14	1								1								2							
15.0	WCA15				2											2					1				
16.0	WCA16					2								1								2			
17.0	WCA17	2								2								3							
18.0	WCA18	1								2									2						

Collection Timing:

Shift 1 (S1) = 07:00AM – 09:00AM

Shift 3 (S3) = 05:00PM – 08:00PM

Shift 2 (S2) = 11:00AM – 02:00PM

Shift 4 (S4) = 09:00PM - 10:00PM

Collection Category:

Dry Waste Collection Period

Wet Waste Collection Period

Contact Point:

Greenerway: 1213/17111213 or Thromde Office: 2550/336310

Collection Area:

WCA01: Upper Motithang, Royal Institute of Tourism and Hospitality, Double Turning, Motithang Higher Secondary School and Lhengay Densa



WCA02: Changangkha Lhakhang, CDCL office, Motithang BOD, Livestock office, and Shop No.7 areas



WCA03: YDF, NPPF colony, above shoppers store, JICA office, MoEA, NRDCL, BCCI, ACC club,

WCA04: YDS, Swimming pool, RKHSC, 3Tanks, CDB office, RUB, MoLHR, DGPC office, Kuzu office, Drukair office, MoIC and BBS



WCA05: BOD, Thromde office, IMTRAT, LeMeridien, Namgay Hotel, Kelki, Thai Pavilion, along Norzin Lam till Chubachu junction

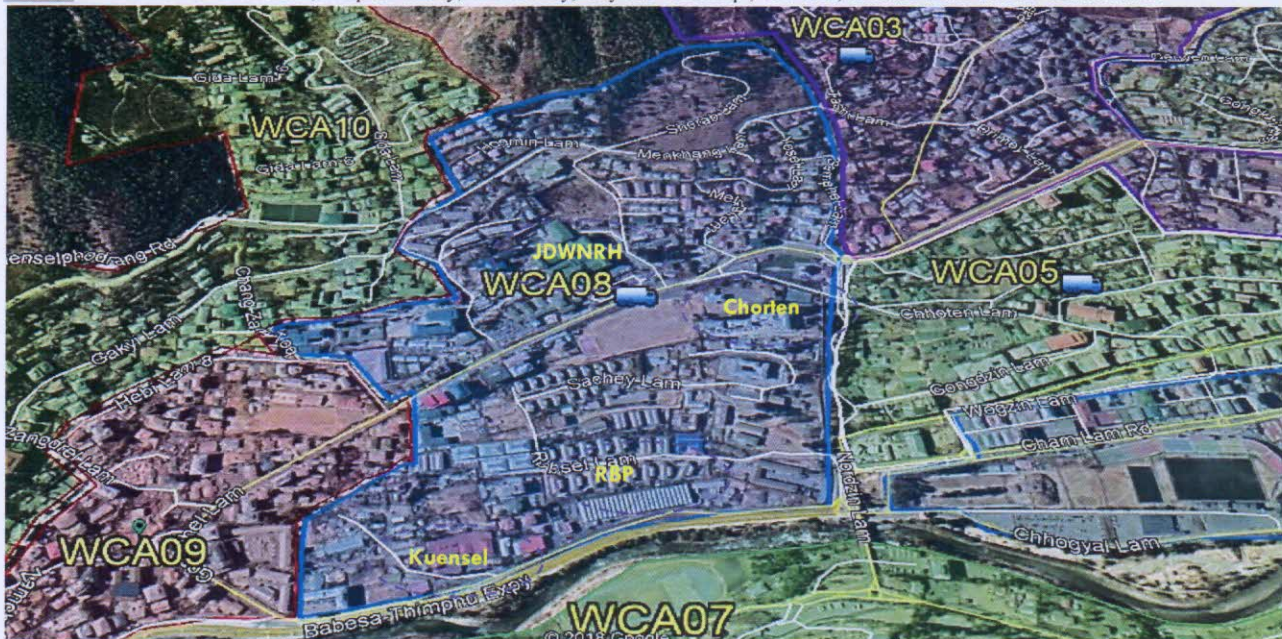
WCA06: JOJO's building, City bus terminal, MoWHS, City Police, BPC, Taj, BDBL office, RTA, MyMart, Tarayana, and CFM areas



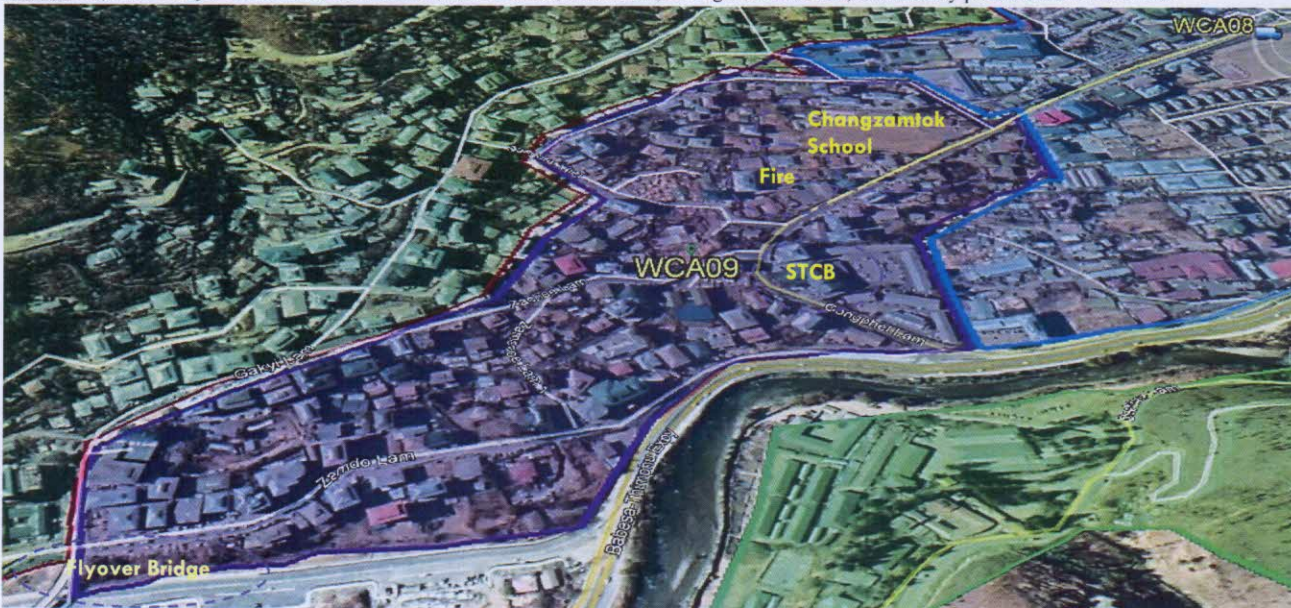
WCA07: Jamyang Resort, River View, BSB office, District court, RSTA, Lungtenzampa School, YHS and Samerzingkha colony



WCA08: Above Memorial Chorten , Hospital colony, RBP colony, city bus workshop , TPS area, Kuensel office and KD sawmill area



WCA09: Flyover Bridge, Call Center, Deki School, STCB office, Fire office, Changzamtok school, Community police and Sawmill areas



WCA10: Changgedaphu area, Druk school areas, along and above Changzamtok ring road till Flyover Bridge.



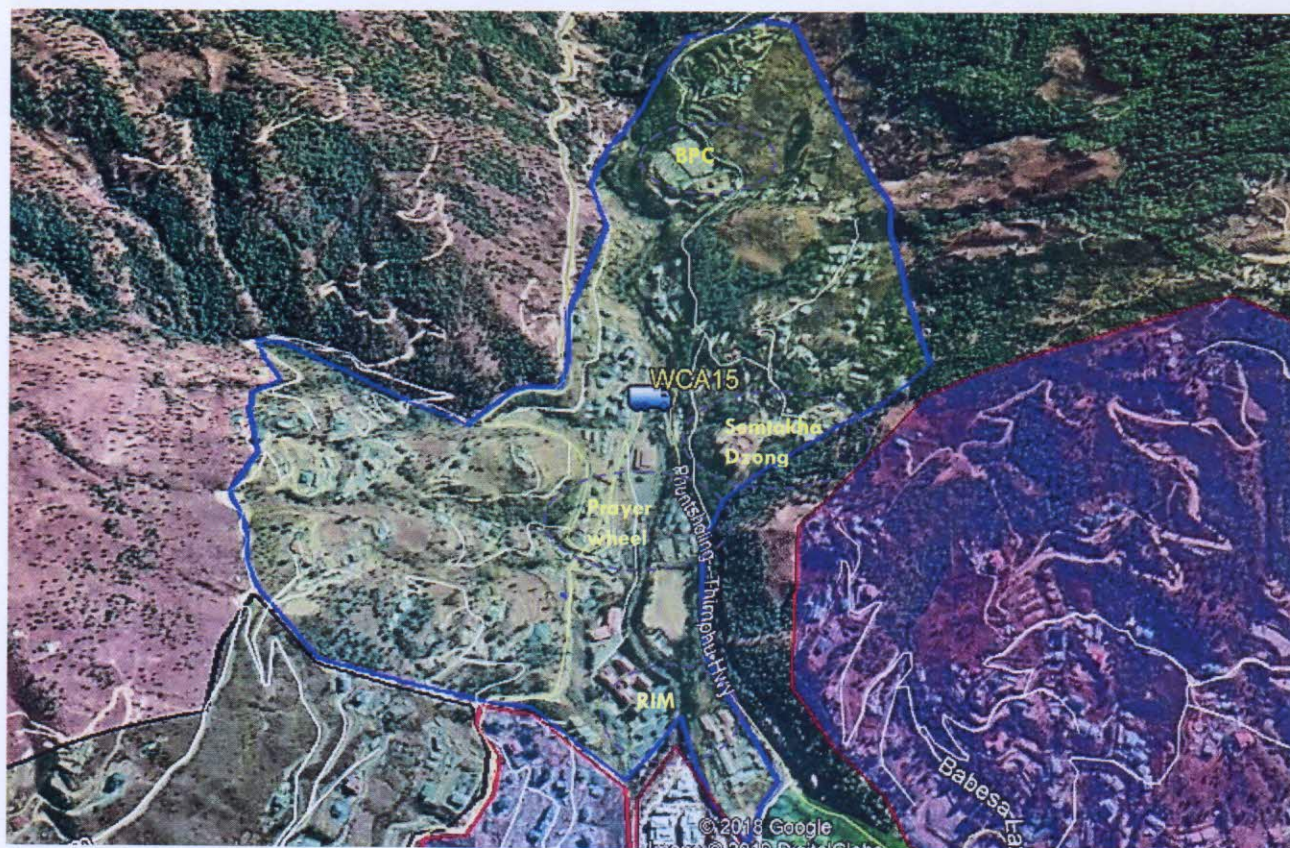
WCA11: Changbangdu areas



WCA12: Changjiij areas, Rashikhar, Pelkhel School
WCA13: Olakha area,
WCA14: Changdelu, RBA areas, Lubding areas

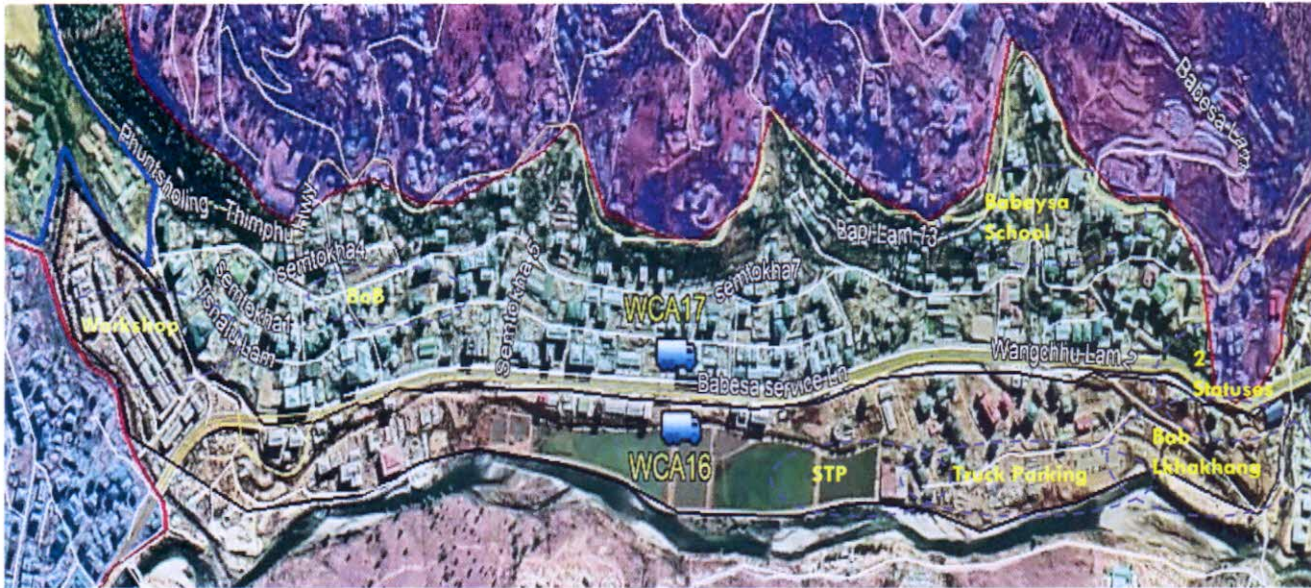


WCA15: Areas above Semtokha Prayer wheel, RIM areas, Semtokha Dzong and BPC substation areas



WCA16: Olakha Workshop area, BOD, Sewerage Treatment Plant, Truck parking area and Bab Lhakhang areas

WCA17: Between old highway and expressway from workshop junction till Babeysa two statues.



WCA18: Above Babeysa old highway including Dantak Canteen, Babeysa School, IT parks, Botanical garden, Biodiversity Centre, Gabjakha and IMS

